

Processing 2D Total Vectors

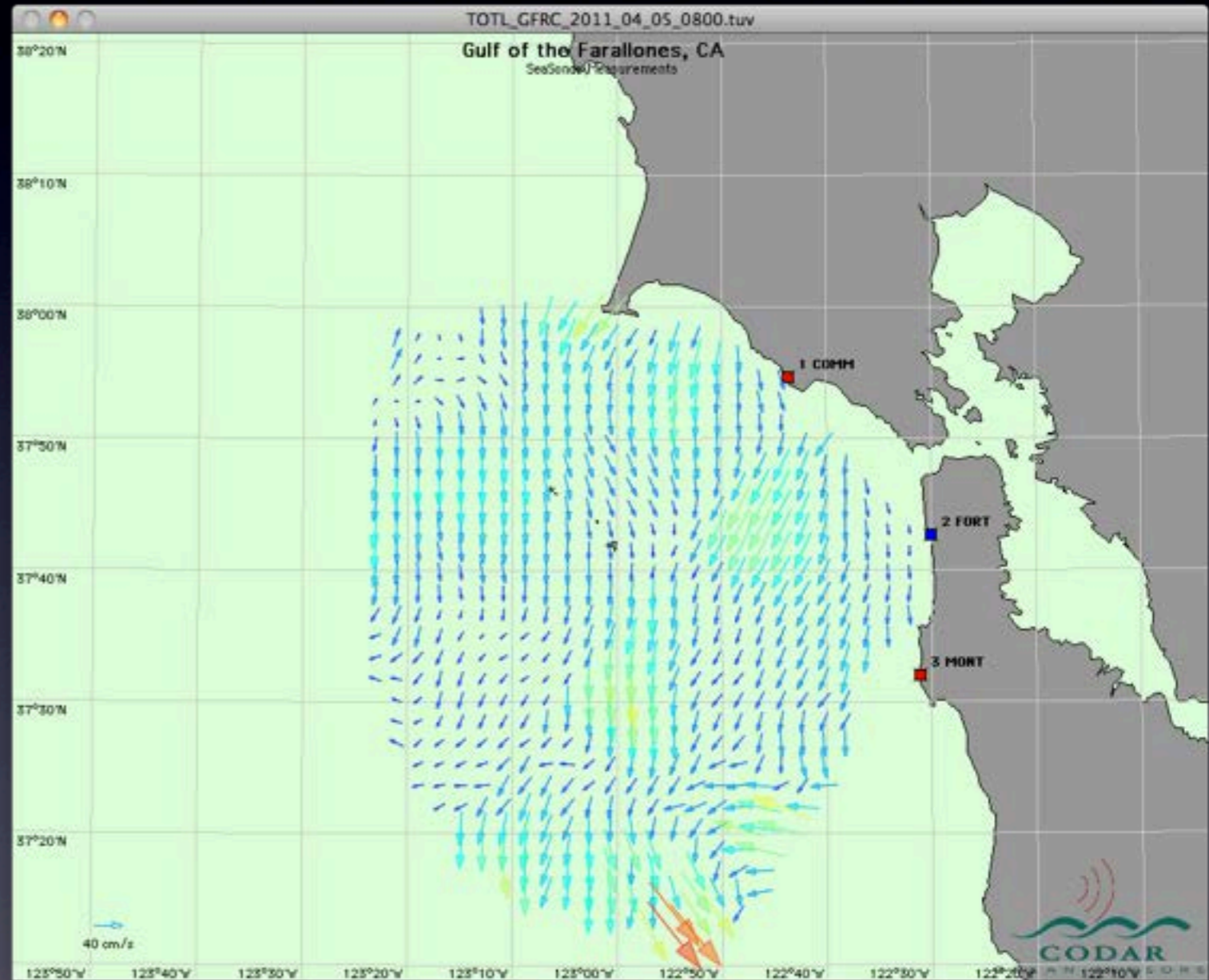
CODAR Ocean Sensors, Ltd.



Processing Totals

To process totals, you need 4 things:

- Radials
- SDSite map
- CombineConfigs & Software License Key for Release 7



SeaSondeCombineOptions

- Found in SeaSonde/Apps/CombineTools
- Used for checking and adjusting Combine processing parameters
- References Grid files in the CombineConfigs folder
- Make adjustments to:
 - Averaging radius
 - Maximum current
 - GDOP
 - Baseline interpolation

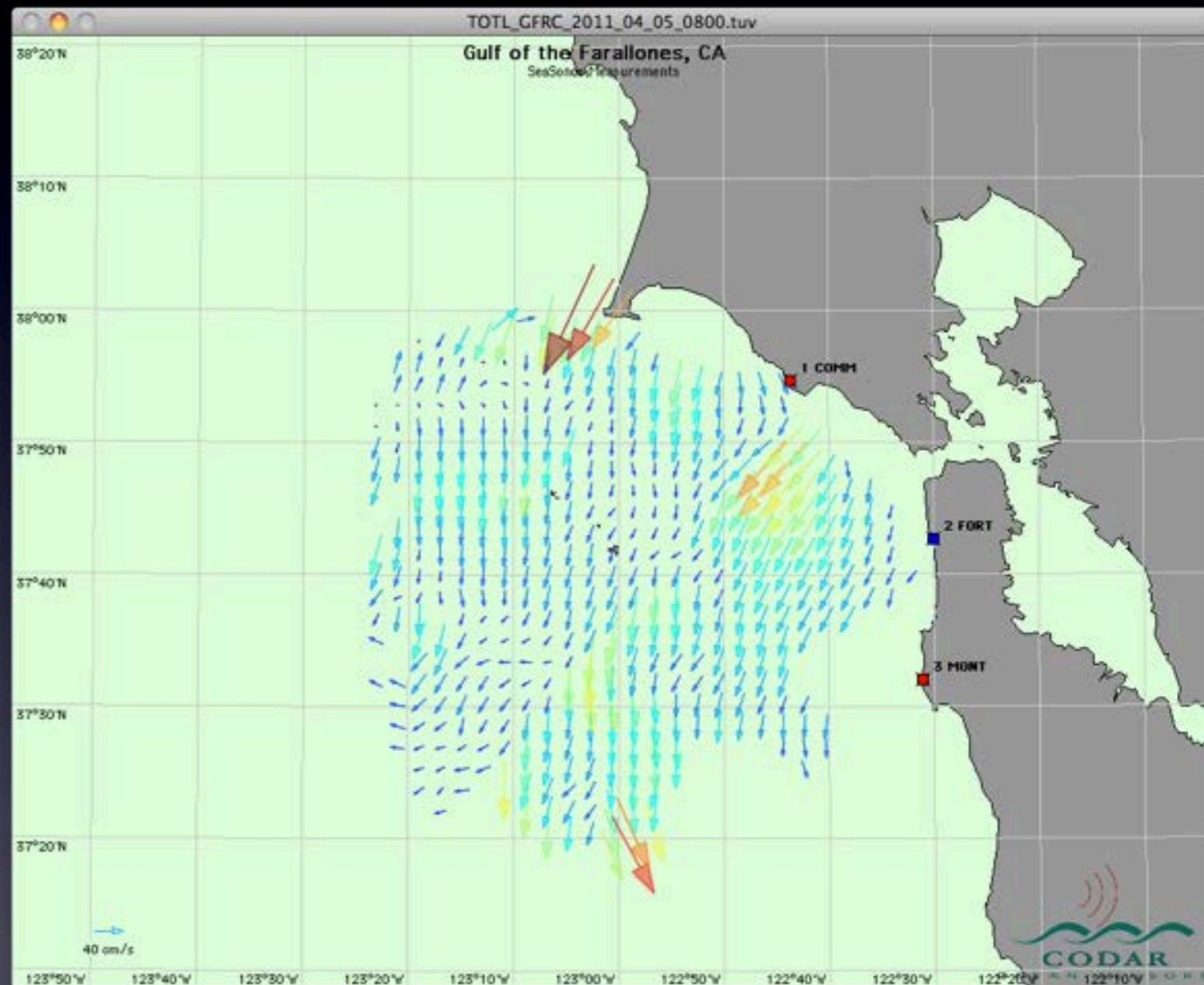


Processing Totals

- Radials need to be in the RadialSites folder. Naming convention is Site_XXXX or Site_1, Site_2, etc.
- Make adjustments to processing parameters in SSCO
- Start RunCurrentAnalysis with the link in the dock, or, SeaSonde/Apps/CombineTools
- View total vector creation with SeaDisplay

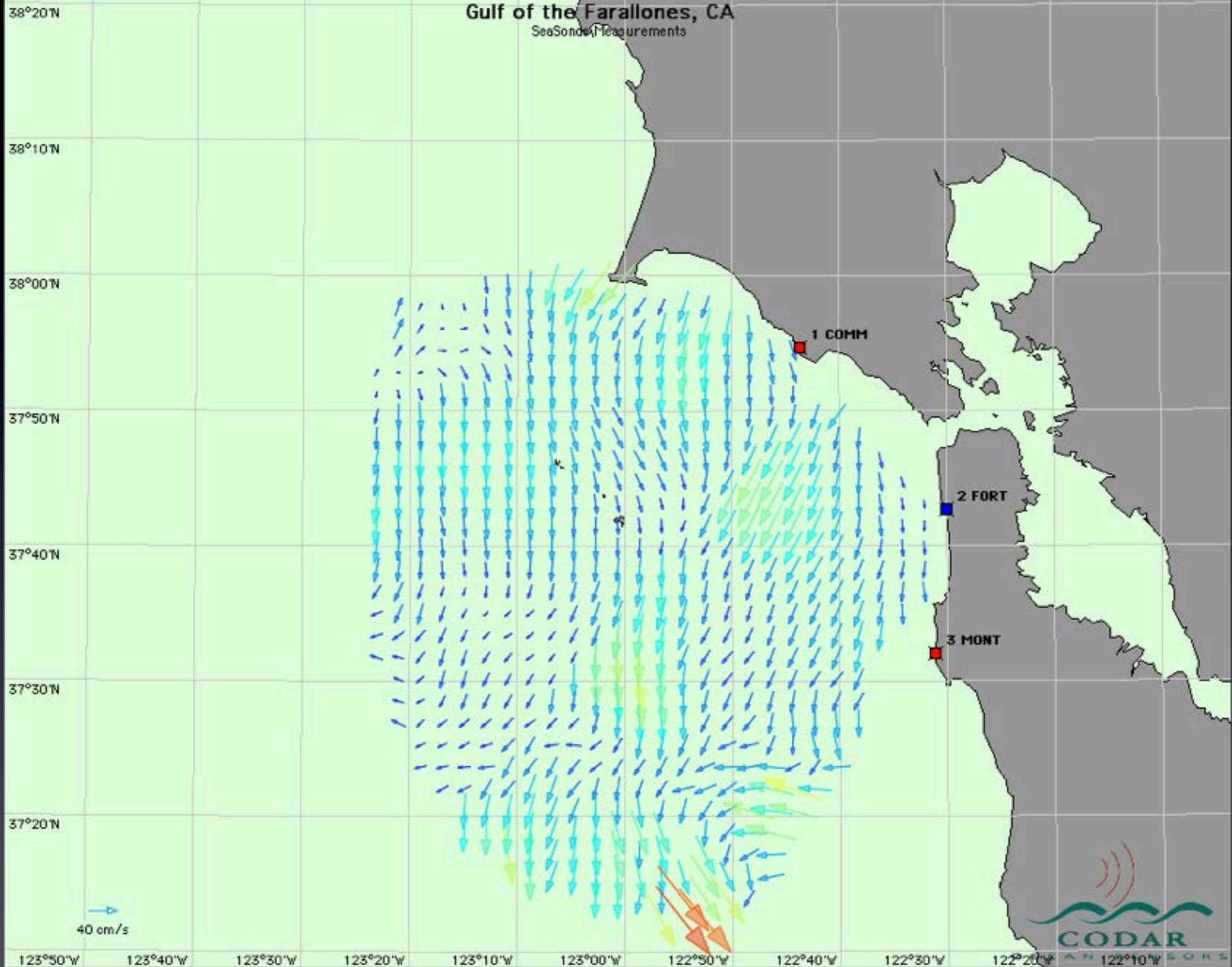
Reprocessing Data

- Adjust parameters in SeaSonde CombineOptions
- Empty Processings folder and empty trash
- Relocate old totals for future comparison
- RunCurrentAnalysis



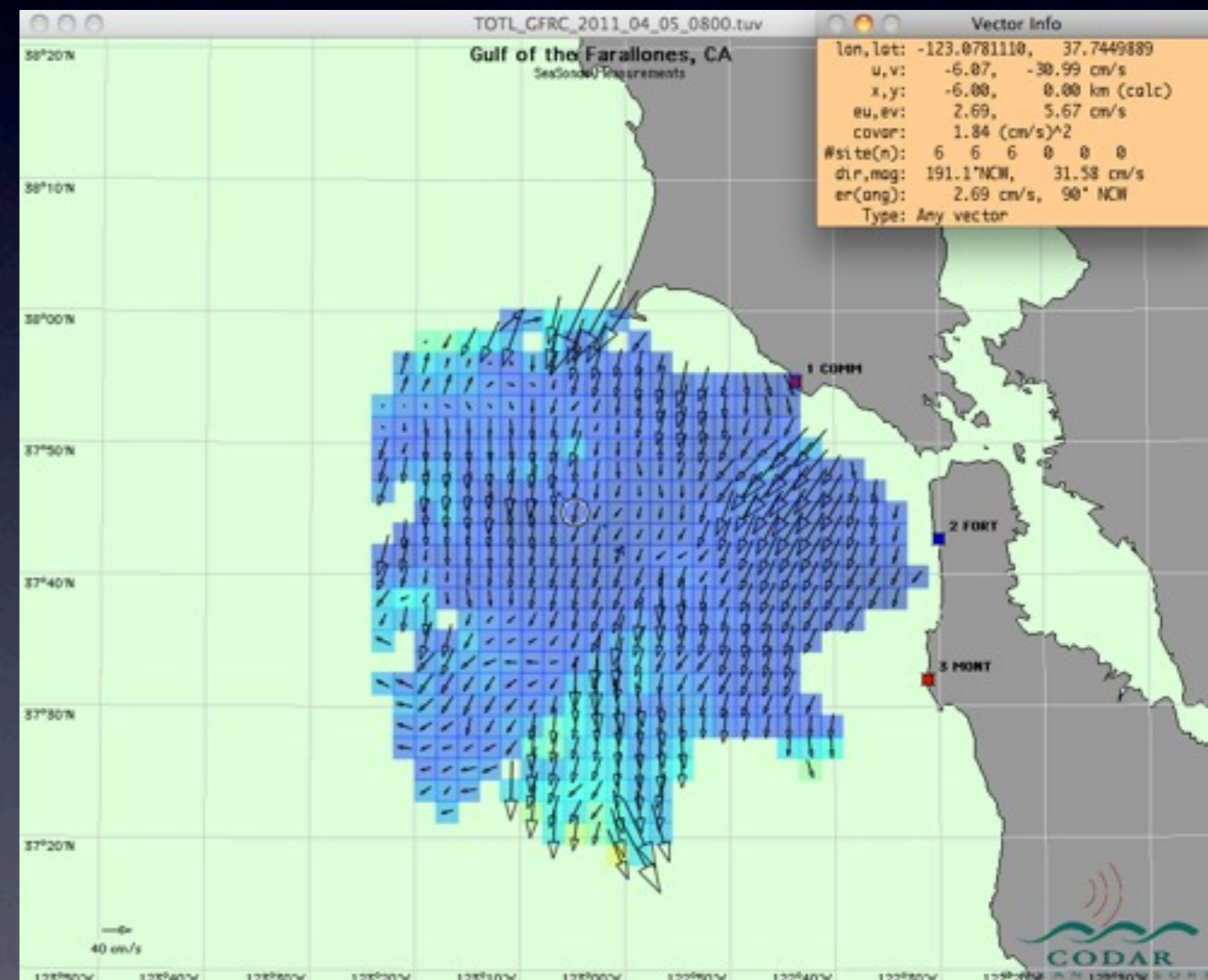
Gulf of the Farallones, CA

SeaSonde Measurements



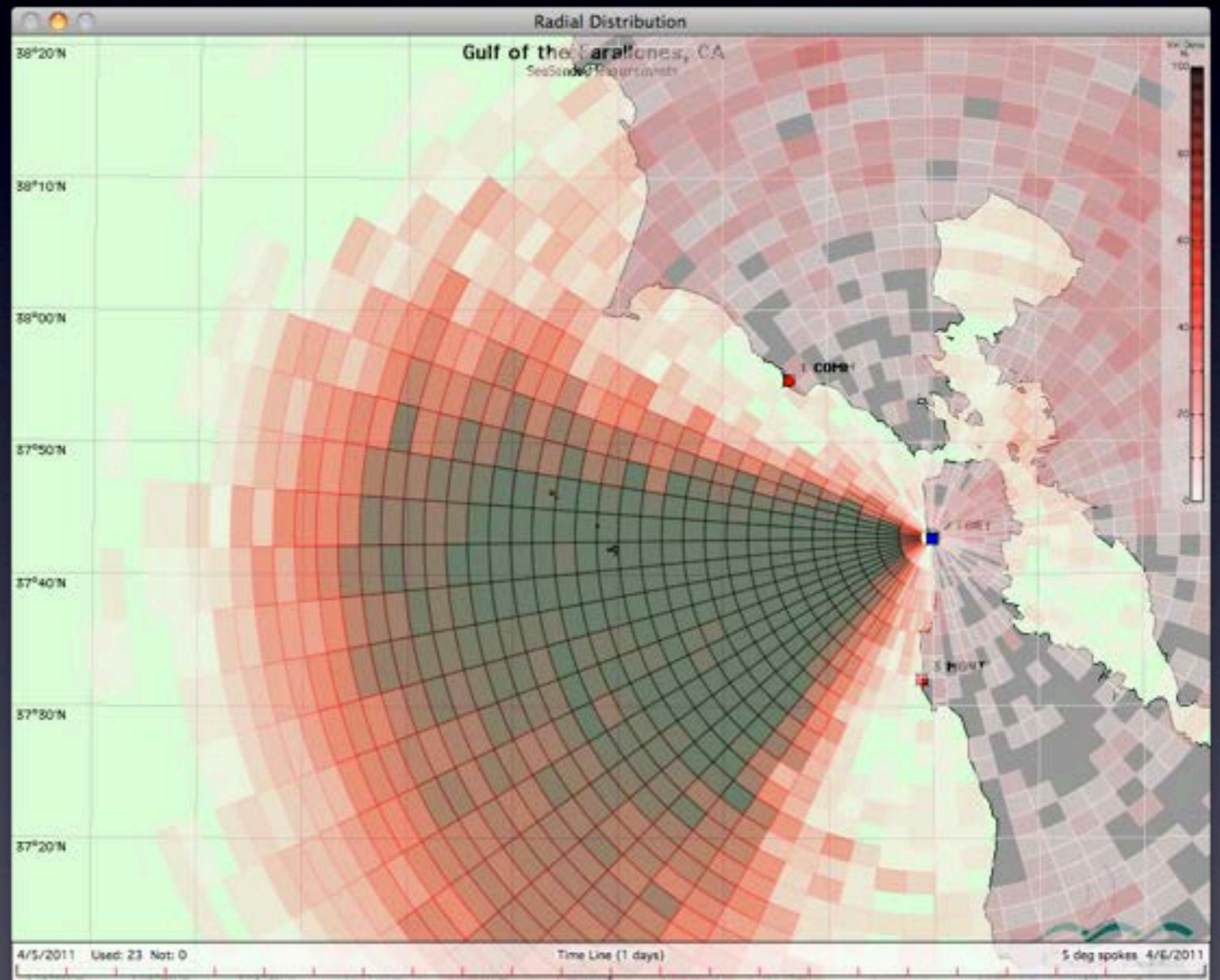
Using SeaDisplay to View Your Data

- SeaDisplay can be used to:
 - View reprocessed data
 - View radial distributions
 - Plot uncertainties
 - Get statistics on vectors
 - Make movies of radial vectors or total vectors



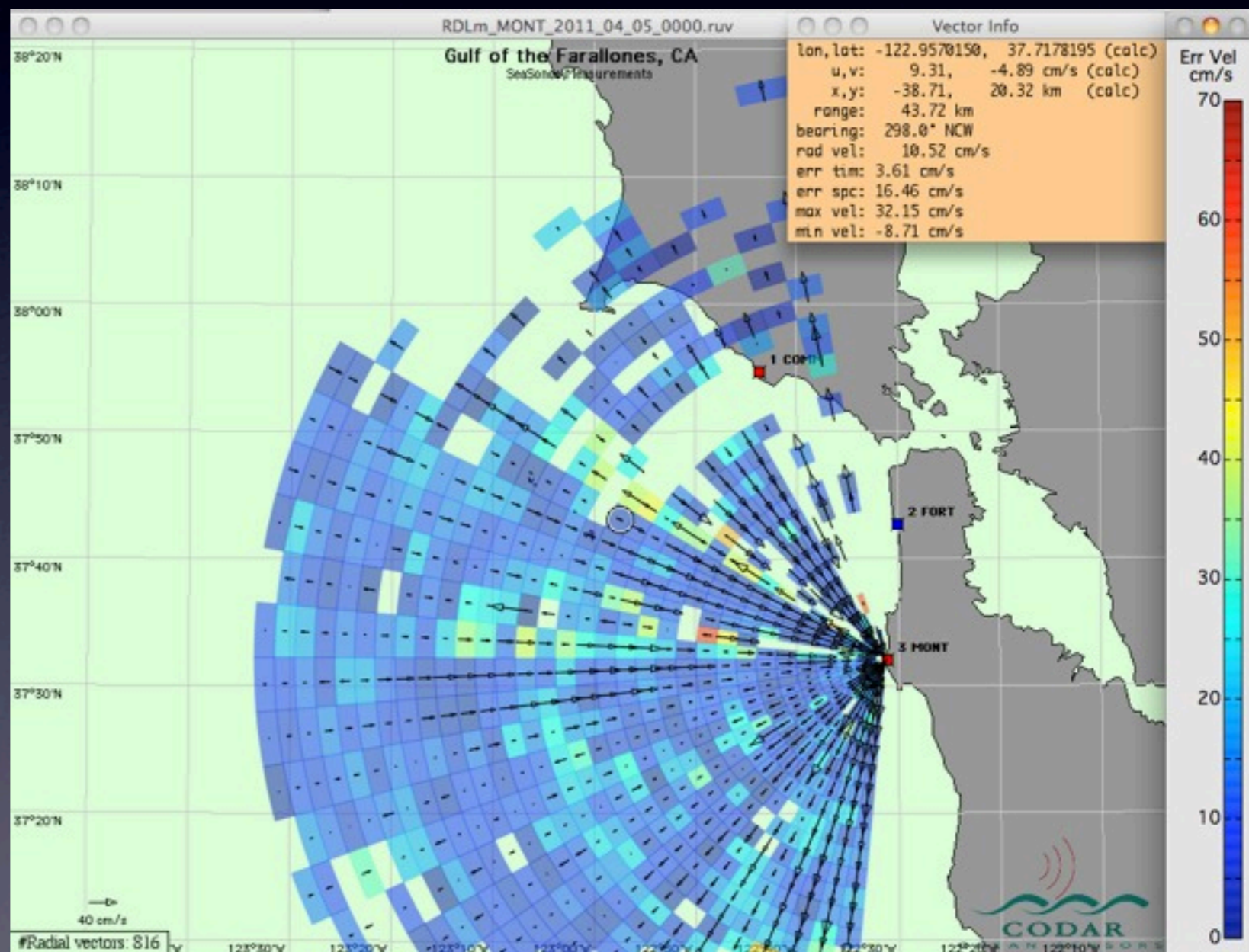
Radial Distributions

- Distribution of radials over time
- Under Display select '*Radial Distribution*'
- Select the folder of radials you want to make a distribution for



Plot Uncertainties and Get Vector Info

- In Display menu choose 'Show uncertainties' to plot uncertainties over vectors
- Choose 'Show vector info' to see stats on vectors



Movies of Radial and Total Vector Files

- Helpful when viewing reprocessed data
- Under the File menu select 'Create movie'
- Navigate to the files you want to use for your movie
- Name your movie, watch your movie