



SeaSonde Combine Suite Release 6

Installation Guide

Nov 5, 2010 © Copyright CODAR Ocean Sensors, Ltd.

Overview

This document is to guide you through the Combine Suite installation.

This document assumes that OS X 10.6.x is already installed. OS X 10.4.11 and 10.5.8 will work but some of the control panels discussed in this document will be in slightly different locations than described here. **(Release 6 will not work with OS X 10.3 or earlier)**

Before you start, confirm that the computer meets the minimum requirements for proper SeaSonde operation. You can find the system specs by selecting “About This Mac” under the “Apple menu”. Then click the “Get More Info” button to see the systems’ profile:

Recommended Configuration

Macintosh Intel (MacBookPro, MacPro, MacMini, iMac)
Macintosh G5 500MHz, (PowerBook, Desktop, MacMini)
1GB RAM
100GB hard disk
OS X 10.6.x (You should run the “Software Update”)
USB 1.0

Minimal Configuration

Macintosh G4 500MHz, (iBook, PowerBook, or Desktop)
1GB RAM
4GB hard disk. *(If you have less than 100GB, you will need to change Archivalist settings to store less data.)*
OS X 10.4.11 (You can install 10.4.x and then use the “Software Update”)
USB 1.0

Connectivity requirements

The computer must be connected to an Ethernet connection with Internet access for automatic data transfer to the Combine Site, and for full technical support from CODAR engineers. Please read the Communication_Support document.

Running the SeaSonde Installer

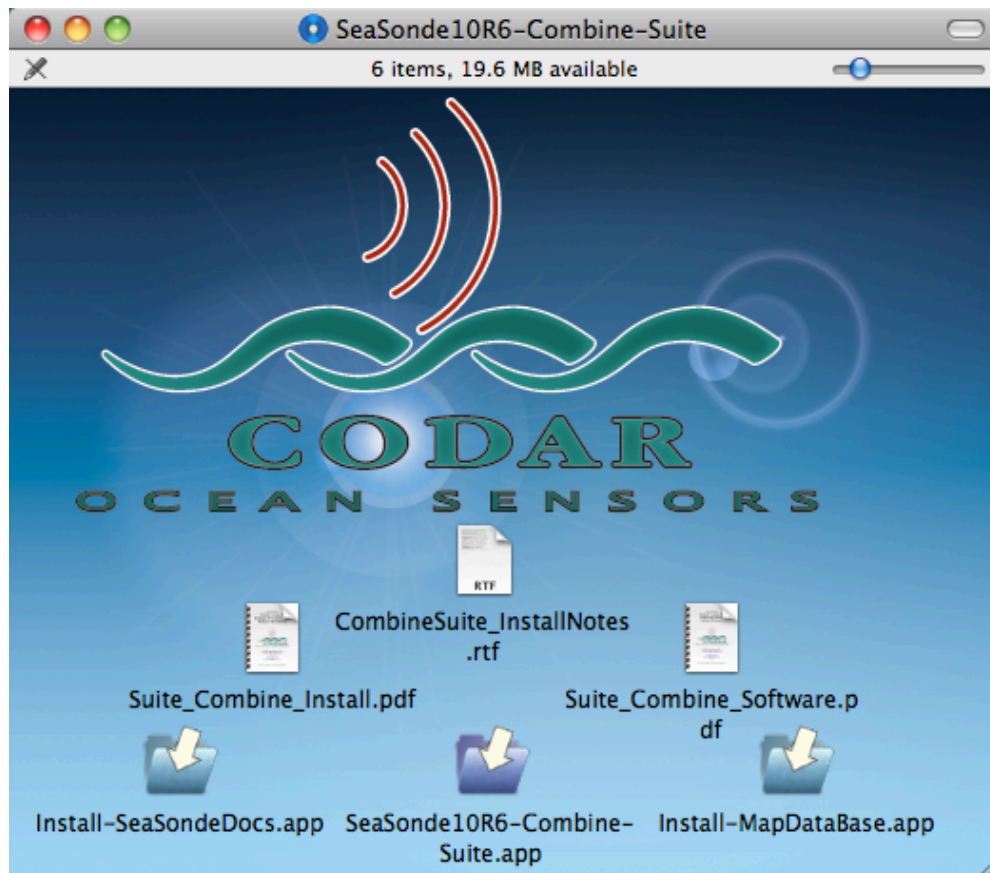
To Install the SeaSonde10R6-Combine-Suite from the installer CD or disk image follow the steps below:

The installer will only install onto the root volume (the disk which the computer booted from).

If you are upgrading a previous SeaSonde installation, the installer will first quit all known SeaSonde applications.

*The installer will not overwrite or delete existing data or configuration files; however CODAR cannot be held responsible for any lost data. You should always **backup** your important data and config files before running any installer.*

Insert the SeaSonde10R6-Combine-Suite CD or open the disk image. A window should appear showing the contents.



Run the Three Installers



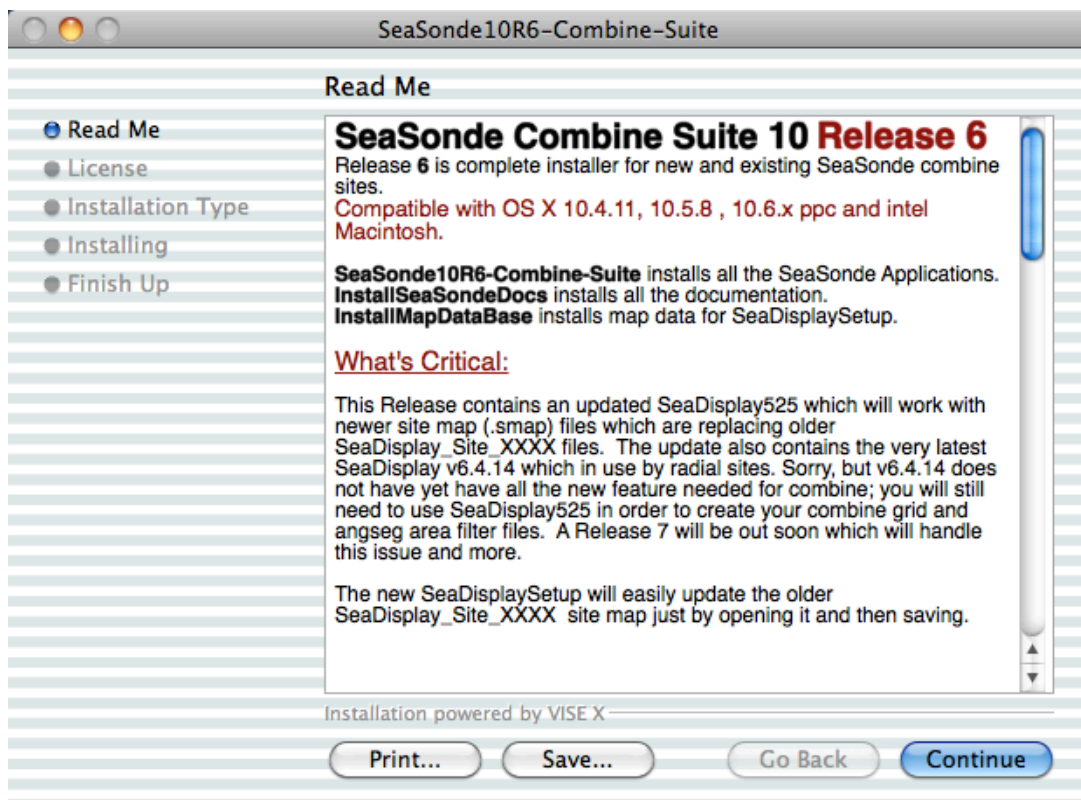
Run the installers in order from left to right, first Install-SeaSondeDocs, then SeaSonde10R6-Combine-Suite, and last Install-MapDataBase.

Double-click ‘Install-SeaSondeDocs’

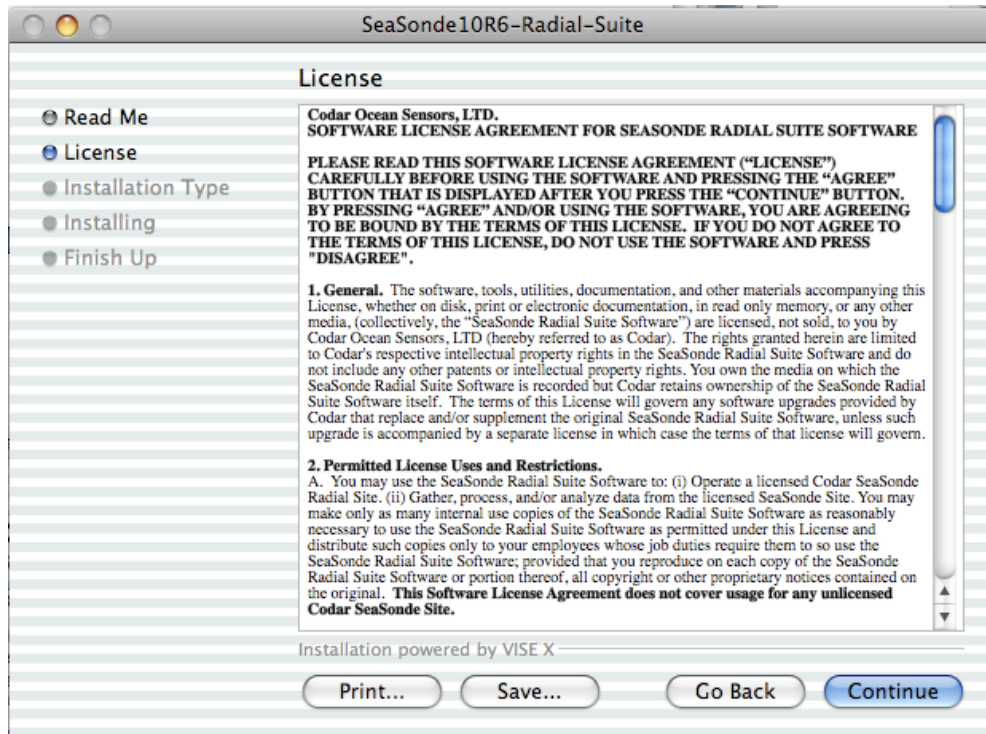
Follow the directions. This installs all the pdf documentation in ‘/Codar/SeaSonde/Docs’ folder on your hard disk.

Double-click ‘SeaSonde10R6-Combine-Suite’.

This will start the software installer.

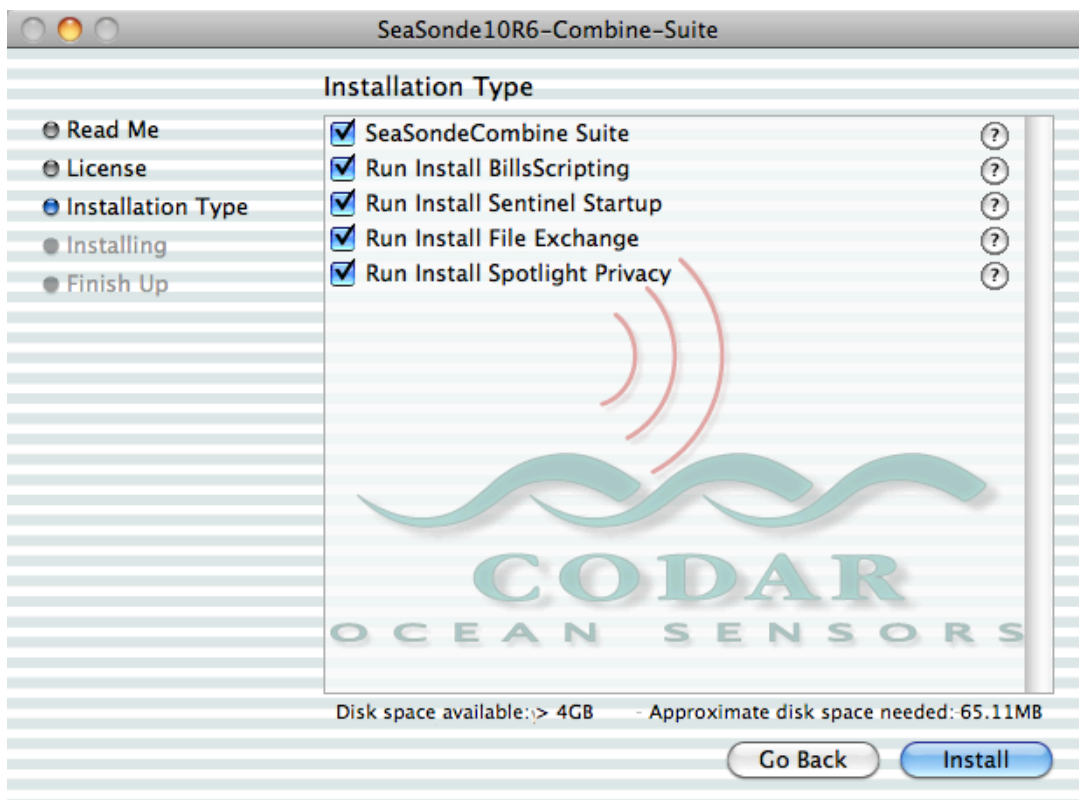


The first step in the installer shows the ‘CombineSuite-Release6-Notes.rtf’ previously noted. If you are not ready to install the software, then quit the installer; otherwise, click the Continue button.



The second step is to read, then choose to accept the licensing agreement.

The next step shows the main installer and sub installers, which are used to modify the operating.



SeaSonde10R6-Combine-Suite installs all the Combine Site applications, configurations, and sub installers. The sub installers below SeaSonde Combine Suite, required to modify the

system, are automatically run (if check-marked) after the SeaSonde Combine Suite. Each sub installer may require your administrative password.

If you are re-installing Release 6, because some applications were lost, misplaced or corrupted, you might want to uncheck sub installers after SeaSonde Combine Suite that you do not wish to run. *You must install BillsScripting, and Sentinel Startup for the SeaSonde to operate correctly. The recommended installers are checkmarked by default.*

The sub installers are also copied by SeaSonde Combine Suite into “/Codar/SeaSonde/Apps/Installations” folder. You can manually run them at a later time, if necessary.

Run Install BillsScripting installs BillsScripting addition, which is used to help restart the computer and also to set the computer’s date & time. This is required by Sentinel to restart the computer.

Run Install Sentinel Startup installs a User startup item to launch the Combine Site Sentinel application each time the computer starts up. The Combine Site Sentinel then launches all other real-time applications required for SeaSonde Combine Site.

Run Install FileExchange installs

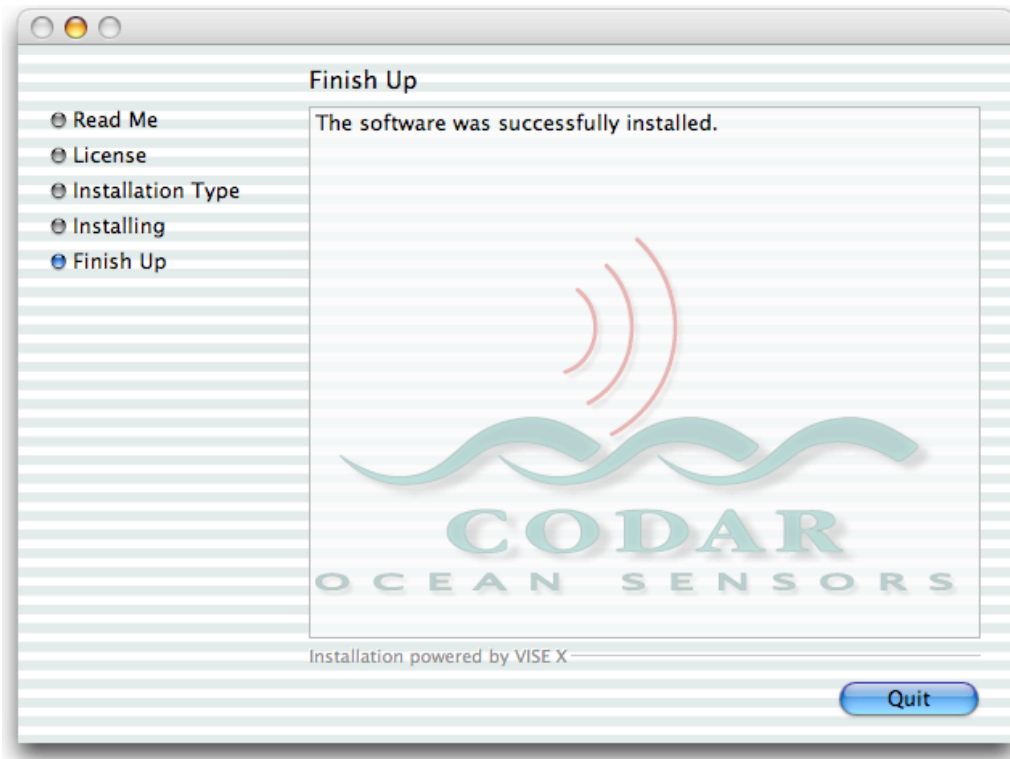
When you click the Install button for Combine Suite, the installer will copy all the SeaSonde Combine Suite applications and then run each of the sub installers that were selected one at a time.

Many of these sub installers will require that you enter your computer administrative user name and password. Be sure to quit each sub installer when it is finished in order for the main Combine Suite Installer to continue.

If you need to run any of the sub installers at a later date, you will find them in the “/CODAR/SeaSonde/Apps/Installations” folder.

These Installers modify the system and may require an Administrative password.

Once you have finished the sub installers, the suite installer will now be in the foreground and show:



Click the "Quit" button to quit the installer.

Double-click 'Install-MapDataBase'

Follow the directions. This installs all the database files needed by SeaDisplaySetup in order to create a SeaDisplay site map to plot totals with.

Finishing Touches

OS X features a tool bar on the left side of each new window. You can activate this feature by bringing “Finder” to the foreground and selecting “Preferences” under the “Finder” pulldown menu. Select the appropriate sidebar options (Figure 14). Now open a new window by double-clicking the hard disk icon, drag all of the unused items (e.g. Documents, Movies, Pictures) off the sidebar and add (by dragging) the following folder onto the side bar: “Apps”, “Configs”, “Spectra”, “Radials” and “Waves”.

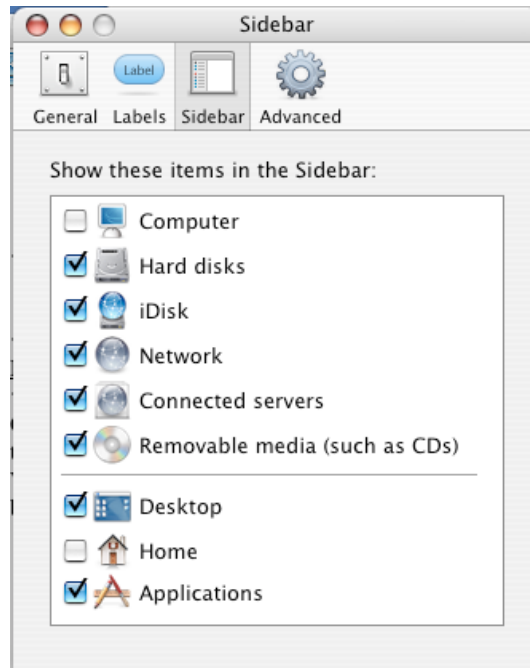
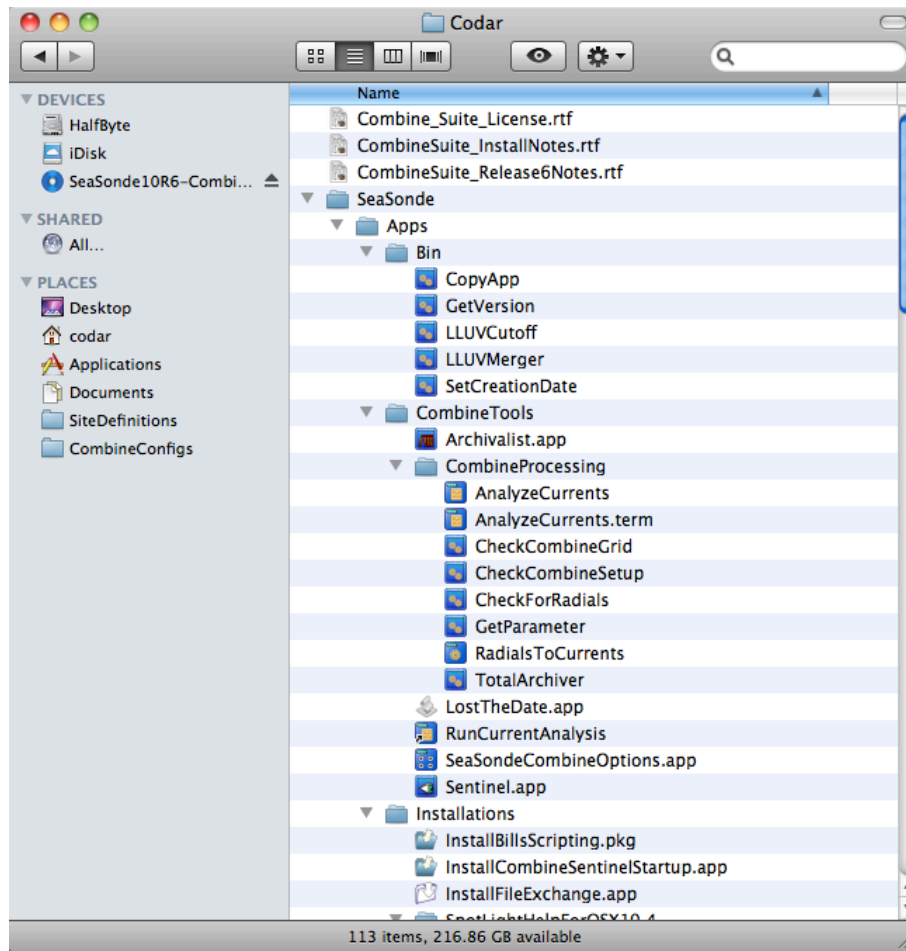


Figure 14 OS X Sidebar Settings

These finishing touches make it easy to quickly access commonly used SeaSonde applications and data files. Feel free to add additional SeaSonde applications and folders that you use frequently.

When you have completed the installation the contents of the Codar folder should look like this.



SeaSonde Combine Suite is now installed.

Finally, you should RESTART the computer. After the computer restarts, the Sentinel application should automatically start up and, after a pause, Sentinel will start all the other SeaSonde applications.

If you have any problems with the installers, locate the 'CodarInstall.log' and SeaSondeInstall.log on your system volume (CodarData) and send it to CODAR Customer Support.

Disclaimer

Copyright:

This documentation and the software described in it are copyrighted, with all rights reserved by CODAR Ocean Sensors, Ltd. (COS). Pursuant to the United States copyright laws, neither the documentation nor the software may be copied or otherwise reproduced, in whole or in part, without prior written consent of COS, except in the normal use of the software or to make a backup copy. Any permitted copies must include the same proprietary and copyright notices as were affixed to the original. This exception does not allow copies of the software or manual to be made for others, whether or not sold. Under these laws, copying includes translating into another language or format.

Trademarks:

The designations SeaSonde and WaveSonde are trademarks registered by CODAR Oceans Sensors, Ltd with the United States Patent and Trademark Office, Washington, D.C.

Waiver of Legal Responsibility

Although CODAR Ocean Sensors has tested the software and reviewed the documentation, COS makes no warranty or representation, either expressed or implied, with respect to this software and manual, its quality, performance, merchantability, or fitness for a particular purpose. As a result, this software and manual are sold "as is", and you, the purchaser, are assuming the entire risk as to the quality and performance of the software.

In no event will COS be liable for any direct, indirect, special, incidental, or consequential damages resulting from any defect in the software or in its documentation, even if advised of the possibility of such damages. COS will not be liable for any applications or data used with COS products, including any costs of recovering said applications or data.

CODAR Ocean Sensors, LTD.
1914 Plymouth St, Mountain View, CA 94043 USA
Tel. (408) 773-8240 FAX (408) 773-0514

www.codar.com
email: support@codar.com